



**Kids for Kerry:** This past Sunday I was privileged to see community in action. Thanks to the organisation of Leanne and Kenn Baker and Ashley Carradus a small concert was arranged and it was a great afternoon of singing and music entertainment. There was great food and drinks too. Thanks to the wonderful donations from community this event raised \$900 for the chaplaincy program. This money will go directly towards our school community.

**Tasmanian Principals visit:** Next week we will host a group of principals from Tasmania. They are visiting to talk with us specifically about our improvement journey to identify the key components to our success so far. This is a "feather in our cap" as a team and we look forward to sharing our work so far and the vision for our continued improvement.

**Kerry Jones Visit:** Our Assistant Regional Director will visit us in two weeks. Kerry has been doing some work with her schools around feedback and she will visit four classes during her visit to experience first hand the work we are doing as a team with our explicit teaching agenda. Kerry will also meet with Mr O'Leary and myself to discuss regional agenda.

Sam and I will also attend a meeting with the Regional Director soon to connect with other principals and be informed of regional initiatives and news.

**Ritsumeikan JHS:** Sam and I recently met with Misato to begin early discussion around the itinerary of the upcoming Ritsumeikan Junior High School visit. This is a highlight every year for our students and we look forward to hosting our new Japanese friends again.

**P&C Thank You:** This week is "Thankyou P&C Week". The school works closely with the P&C to achieve great things for our school. The Mums and Dads who regularly attend these meetings and volunteer for a range of activities and events are adding great value to the school community. We couldn't do it without you all. Thank you.

**Writing Cluster Visit:** Next week our writing coaches and the school leaders will meet with three other schools from Brisbane to share our coaching program and listen to others. We are hoping that this will be a time where we can learn new ideas, resources and strategies to help us improve our own coaching program.

**Chappy Week:** This week we celebrate Chappy Week! Chappy Kerry is a wonder member of our team who cares for kids and their families. Thanks for all you do in our community Kerry on behalf of the staff and the community. There will be a breakfast and handball competition on Thursday morning to help raise awareness for our chaplaincy program.

**School Uniform:** Parents, Geebung State School is a uniform school. Can you please ensure that your children come to school in FULL school uniform. Two target areas that we need to improve on are jumpers and shoes. As per uniform policy, our school jumper is a bottle green jumper only. School shoes must be black or predominantly black or white or predominantly white. I have noticed students wearing very brightly coloured shoes that do not meet the uniform standard and I ask that parents ensure that students stop wearing these shoes.

**Report Cards** At the end of this term, students will receive their semester report cards. Reports cards formerly report on the curriculum components that have been delivered and assessed during semester 1. I would like to take this opportunity to remind parents that in order to meet the individual needs of our students we have implemented a differentiated approach to teaching some lessons and concepts across a range of year levels (sometimes called streaming). This means that some students have been accessing curriculum levels that are either above or below the actual year level of the student in order to target their specific needs. In these cases, the students will be assessed at the year level they have accessed. This will be identified by the information written in the comment section of the Key Learning Area. As with all report cards, parents are encouraged to talk with their child's teacher to clarify any information.

This term we are also beginning our rollout to electronic report cards. To assist with this process we would like all families to ensure that our records are correct with your current email address. If you need to update your email address with us could you please fill out and submit the form from this newsletter. For this semester each student will be provided with an electronic report card as well as a paper version. We will switch to electronic for semester 2.

**Matthew Meharg**  
Acting Principal



## this issue

Deputy Principal [P.2](#)

Calendar [P.3](#)

Library News [P.4](#)

HPE News [P.4](#)

Chappy News [P.4](#)

P&C News [P.5](#)

Assembly Photos [P.6](#)

Notices [P.7](#)



# From the Deputy Principal

I'd like to start by thanking our school community. The Kids for Kerry fundraiser was a wonderful day which showcased what a wonderfully supportive community we have. Kerry is a vital part of our school and to have such a huge turnout and to see such generosity is an acknowledgement of the amazing job she does in supporting not only our students, but their families as well. So to everyone who turned out or donated time or money to support our Chaplain, thank you.

**Thank you P&C** - This week is *Thank your P&C Week*. We are extremely fortunate to have such an active and supportive P&C who work tirelessly to improve our school in order to benefit our students. On behalf of all staff and students here at Geebung, thank you for your efforts!

**Academic reporting** - Semester 1 report cards are in the process of being written by teachers. These reports will go home at the end of this term and will provide parents with valuable information on how their child is progressing academically and behaviourally. If there is anything in your child's report card that you do not understand or would like clarified, I would strongly encourage you to talk to their teacher.

**Attendance** - Our current attendance for Term 2, 2015 is 92.8%. For the year to date, we are sitting at 93.1%. Our aim for attendance is 95%. The reason we set the bar so high for attendance is because if students are not at school, they are missing vital components of their education. If you think of your child's education as a

puzzle with attendance as the pieces, the more they are at school, the more complete the puzzle can be. Education Queensland recognises the importance of attendance in relation to achievement which is why we at Geebung State School place such an emphasis on having every student at school every day.

**School zone** - The 40km/h zone around the school is there for the safety of our students. Please be mindful of students when you are driving. If you are entering or exiting the school driveways, please be extra careful of students who are crossing these driveways.

**Pre-Prep Transition** - Matthew Meharg and I are working on improving our Pre-Prep transition program. If you are a parent with a child who is currently in Prep, we would like to hear your thoughts on how we can improve the transition from Pre-Prep to Prep. Please help us so that we can improve our processes to make the transition even smoother for our next group of Prep students.

**Parent Details** - If you have moved house, changed your email address or have a new phone number, please ensure you notify the school of these changes. Phone numbers and email addresses are particularly important as we use these methods of communication regularly.

**Sam O'Leary**  
Acting Deputy Principal



2016

## PREP ENROLMENTS

Parents and caregivers with children starting Prep in 2016 are asked to please make contact with the school to enrol for next year at their earliest convenience.



## PREP OPEN DAYS

Come in and see what Geebung State School has to offer.

9:00—10:00am

Tuesday 23 June 2015

Wednesday 24 June 2015

## UPDATE PARENT EMAIL ADDRESS:

Parent/Guardian Name: \_\_\_\_\_

Student Name: \_\_\_\_\_

Student Class: \_\_\_\_\_

Email Address: \_\_\_\_\_

Please return to the school office or send email to [info@geebungss.eq.edu.au](mailto:info@geebungss.eq.edu.au).

# Dates to Remember

Date	Event
<b>May</b>	
24-30	• Chappy Week
28	• BBO Breakfast hosted by Chaplain for Chappy Week from 8am
<b>June</b>	
9	• P&C Meeting 7pm Library • Yatala Pie Drive Order deadline
11	• Northside Band Blitz Workshop, Aspley State School – 9am registration
17	• Instrumental Concert School Hall
18	• Yatala Pies pick up from school hall 2:30—3:30pm
23	• Prep Open Day 9:00—10:00am
24	• Prep Open Day 9:00-10:00am • School Disco
26	• Senior Athletics Carnival (9 years and older) at Bowden Park 9am—3pm • Last day Term 2
<b>July</b>	
13	• Term 3 begins
<b>August</b>	
13	• Craigslea State High School Gold Coast Music tour visit 12 -1pm concert
28	• Shine Alright - whole school performance
<b>September</b>	
3	• Father's Day Stall
8	• School Photos
18	• Last day Term 3
<b>October</b>	
5	• Labour Day
6	• Term 4 begins
7-9	• Year 6 Currimundi Camp
<b>December</b>	
2	• School Disco
9	• Year 6 Graduation Dinner
11	• Last Day of Term 4

**PIZZA CAPERS WAVELL HEIGHTS IS OFFERING**  
**FREE KIDS PIZZA**  
 WITH THE PURCHASE OF ANY LARGE PIZZA

FOR ALL GEEBUNG STATE SCHOOL FAMILIES & STAFF



3266 7166  
 PIZZACAPERS.COM.AU

**PIZZA CAPERS**  
 EXPERT PIZZERS

**Donna's Family Day Care**  
 (The lady with the big pram)  
 0412 781 529

Wesley Mission  
 Brisbane Family Day Care

**wesley mission**  
 brisbane

**KARATE** 

**Learn the Correct Way**

High quality instructors all taught by  
 Chief Instructor Sóchó Barraud, 8th Dan

*Club established for 40 years*  
 Junior and senior classes

**Geebung State School Activities Hall**  
 Mobile: 0422 817 150 or 0438 838 445

**CareerKeys** **FREE COURSES**  
 for eligible participants – limited time only



**LOOKING FOR A REWARDING CAREER IN AGED CARE OR THE BUSINESS SECTOR?**  
 Spaces are limited  
 Don't miss out on this fantastic opportunity

**Enquire TODAY! Phone 07 3200 2700**  
 E enquiries@careerkeys.com.au W www.careerkeys.com.au

**Other courses available:**  
 Disability | Home & Community Care | Education Support (Teacher Aid) | Community Services Work | Employment Services | Youth Work

**wesley mission**  
 brisbane  
 www.wmb.org.au

# Library Resource Centre

## Book Club

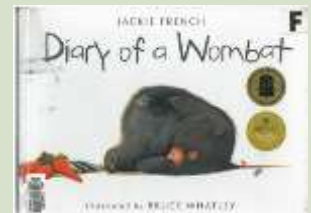
Book Club magazines have been handed out this week and the orders are due in to Mrs Wretham by **3<sup>rd</sup> June 2015**. Take a look at all the wonderful books for each year level- you might find something fascinating, thrilling, humorous, scary or informative. Each book you purchase helps us to save points to buy more books for the library!

## Gold Star Books

Come and check out our **Gold Star Books** at the library- these are books that students and teachers have enjoyed and recommend for others to try. Read a review and see if you would like to borrow it too. Also keep an eye out for the ever changing displays at the front desk – why don't you try a new author, a new series or a change of topic? Challenge yourself for June!

*"Today a reader, tomorrow a leader."* Margaret Fuller

**Helen Waters**  
Acting Techer Librarian



## HPE News

### **The Senior Athletics Carnival is on Friday 26<sup>th</sup> June 2015**

The carnival is held at Bowden Park and will run from 9am – 3pm. It is for students aged 9 years and older. It would be great to see as many parents as possible come and support our athletes on the day. The Junior Athletics Carnival has been scheduled for term 3.

Recently our Geebung State School Cross Country team competed at the Bramble Bay Competition. Well done to Bigoua R, Ashley S, Frank Mc, Eva M, Dylan B, Aaron S, Andon G and Jack B. I am extremely proud of their efforts and their dedication to health

and physical activity. Special mention must go to Riley E who placed 10<sup>th</sup> and just missed out on selection in the Met North team.

The HPE Award acknowledges exceptional effort and attitude in HPE lessons. Recent winners have been Apiew R (PA), Lester T (PB), Bailey I (5/6B), Geoffrey G (4C), Nate B (1B) and Ransilu L (1/2A). Well done!

**Leigh Stagg**  
HPE Co-ordinator

## Chappy News

### Chappy Week

What a great way to start Chappy Week with the Kids for Kerry fundraiser. This was a great afternoon. I wish to thank everyone who attended for their support. Thank you to the kids from Wesleyan Kids' Club whose idea it was to raise funds for chaplaincy service here at Geebung State School. Thank you to everyone who was involved in organising, baking, serving or performing. Thank you to everyone who has so generously donated especially the children. I have heard many stories of children wanting to hand donations over themselves and even of one young man who donated half of his tooth fairy money.

I would also like to thank Cr Fiona King and Leanne Linard MP for Nudgee not only for their generous contribution to the Kids for Kerry fundraising, but also for their support of chaplaincy here at Geebung State School.

### What is a School Chaplain?

Because it is Chappy Week I thought I would take this opportunity to explain about what SU QLD Chaplains do.

A school chaplain is a safe person for children to connect with at school, providing a listening ear and a caring presence. They care for students and families going through difficult situations. Chaplains run positive, fun activities both in and out of school and foster a supportive, caring school community. Chaplains also provide spiritual support and direction for the whole school community.

If you would like more information on the Chaplaincy service here at Geebung State School please don't hesitate to contact me on [kerrye@chappy.org.au](mailto:kerrye@chappy.org.au) or ph. 36238777 (Tues-Thurs).

### Chappy Kerry



Our next meeting will be held in the library on **Tuesday 9<sup>th</sup> June @ 7pm** and all are welcome to attend.

Please join our Facebook page "Geebung State School P&C Association". This is also a great way to keep informed on any events or important information that is happening in the school.

*Ashley Carradus – P&C Secretary*

## Banking

If you wish to open a school bank account, simply take your child's birth certificate to your nearest Commonwealth Bank branch and be sure to mention that it is for school banking. Children collect reward points every time they bank and once they have received 10 points, they get to choose a prize. The bank also recognises consistent bankers whereby they issue a report stating who is due for an award (usually after every 10 deposits). These awards are then handed out in assembly.

## Fundraising

### YATALA PIES

The Yatala Pie Drive is on again. Yummo!! Order forms were sent home this week. This is a great opportunity to stock up your freezer for winter, and also to sell these delicious pies to family and friends while raising funds for our school.

Please ensure all order forms are neat and easy to read so there is no confusion or miss ups with orders. Order forms and money must be placed in a sealed envelope and be returned to the drop box in the office by **Tuesday 9th June 2015**. Sorry but no late orders will be accepted.

Pies will be available for pickup from the school hall on Thursday 18 June 2015 from 2:30 – 3:30pm.

*Julie McMahon - Fundraising Coordinator*

## Tuckshop

Thank you to everyone who has put their name down to help out on TREAT DAY.

All donations of muffin mix, canned tomato, sugar etc. are greatly appreciated and can be left at tuck-shop.

There have been two new people put their names down on the roster - thank you.

A big thank you to the person who sent me a beautiful bouquet of flowers to school the week before last. Then last week I got the loveliest handwritten card and gift voucher card sent to me. I do not know if the card is from the same person as who sent me the flowers or not and I just would like to say thank you to the person or persons who did these lovely things. Please come forward and let me say thank you for these kind and lovely things to you in person.

Helen's homemade yummy soup is always for sale in terms two and three. There is pumpkin, vegetable or chicken and vegetable and they cost \$2.50 or \$3.00 with a small bread roll.

Every Tuesday morning there is brewed coffee and cake for

sale in the tuckshop - come and get a winter warmer.

The last batch of spaghetti bolognaise that was made at tuck-shop had all the tomatoes in it from our garden.

*Leanne and Helen – Tuck-shop Convenors*  
*PHONE: 32655959*

## Uniform Shop

### Shop Hours

The shop hours for Term two will be Wednesdays 8.15-9.15am. EFTPOS is available on all purchases over \$10.

Winter sale on . . . Grab a jumper from \$1 to \$5.

Basketballs are now \$2. These balls are almost new and an absolute bargain at this price.

### Second-hand Stock

Second hand stock is really low. Please consider selling your outgrown uniforms in the uniform shop. The shop takes 30% commission from all second hand sales. Second hand items are ever changing and stock is always welcomed. Items may be left at the office, the Tuckshop or in the Uniform shop during open hours. Items should be placed in a bag with contact details and clearly marked if they are a donation or to be sold on commission.

### Lost Property

The lost property rack will be on display out near the art room stairs all day Wednesdays. Named items are returned to students as soon as convenient via the office.

### Uniform Standards

Wearing a uniform is a badge of pride, creates an identity for a school and is an important part of being a school student. A school uniform teaches students to dress smartly and take pride in their appearance. An updated uniform pamphlet is now available showing the uniform expectations at Geebung State School. These are available at the school Office and the Uniform Shop.

*Fleur Stanford – Uniform Shop Convenor*

## STUDENT ABSENCE LINE

If your child is going to be away from school please let the school know.

Phone: (07) 3623 8760 or

Email: [info@geebungss.eq.edu.au](mailto:info@geebungss.eq.edu.au).

Assembly Photos



*Congratulations*





# Open Day

Wednesday 17 June

1pm - 3pm  
61 Musk Avenue  
Kelvin Grove

*Alumni Graduate tours of our world class facilities  
Talk to our empowered Alumni community  
See our Academy in a business as usual environment*



QACI is one of three selective entry State High Schools developing highly capable young people on their preferred academic pathways.

At QACI, students study the rigorous International Baccalaureate (IB) Diploma Program which incorporates their creative pathway, develops university research skills and enables opportunities for real life industry experience.

If you are a clever, creative learner who thrives on working with like minded people in areas like Music, Theatre, Visual Arts, Design Technology, and Film then come along to our Open Day.

**Think Clever, Creative, Global, Think QACI.**

Register for more information (07) 33779366 or visit [qaci.eq.edu.au](http://qaci.eq.edu.au)

**GEEBUNG KINDERGARTEN AND PRESCHOOL**

## OPEN DAY

**COME DOWN**  
have a look around  
Meet our teachers and staff  
**Ask Questions**  
Put your child's name down on our waiting list  
Participate in some of the games and activities we will have set up

**C&K Affiliated**  
**5 Day Fortnight**  
QLD Govt approved kindy program from 8.20am - 2.30pm

1 Maidencombe St,  
Geelong  
3265 6609  
[geebungkindy@optusnet.com.au](mailto:geebungkindy@optusnet.com.au)  
Opened since 1966

**Exceeding**  
**NQF Rating**  
Qualified Teachers and Staff  
Natural, fun, creative and safe indoor/outdoor areas  
Quiet street, backing onto park  
Strong Community Presence

Enquire about our subsidised/free fees if you:  
- identify as Aboriginal and/or Torres Strait Islander (or have a child who does)  
- have three or more children, of the same age, enrolled in the same year  
- hold a current Health Care Card, Veterans Affairs Card or Australian Government Pension Concession Card with automatic Health Care Card entitlement

**SATURDAY, 13 JUNE 2015**  
**9am - 11am**

you're invited to a Lorraine Lea

## Party for Kids with Cancer®

fundraising party in aid of children's charity, Camp Quality

*Browse Lorraine Lea's gorgeous range and pick up some handy styling tips during a fun and interactive home styling party for a cause. Feel free to bring a friend or two, because the more we spend, the more we can give to help families living with cancer.*

**date:** Sunday 14th June 2015

**time:** 1pm

**where:** 17 Mayflower Street Geelong

**details:** Teddy Bear's Garden Party Prizes for Best Dressed Bear, Most Loved Bear. Or purchase PJ or Heather Bear to Help Camp Quality and go into the draw to win a prize. I will be donating all profits and host credits to the charity. You can also donate at <https://partyforkidswithcancer.everydayhero.com/au/tonya-viani>

**host:** Donna Viani

**phone:** 0412 781 529

**email:** [donna.viani@optusnet.com.au](mailto:donna.viani@optusnet.com.au)

**RSVP:** Monday 8th June 2015

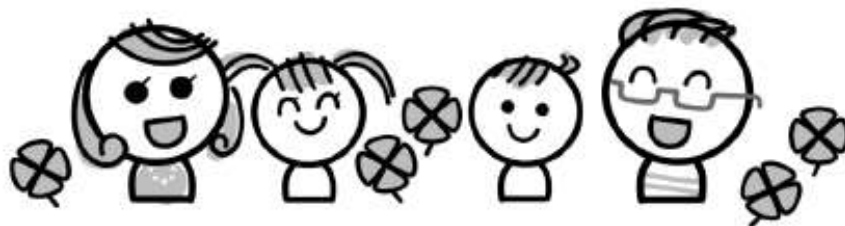
*I look forward to seeing you there!*

**lorraine lea**  
styling home

If you can't make it to my party, let me know if you'd like to place an order. View the online range online at [lorrainelea.com.au](http://lorrainelea.com.au). For a full book your own party!

To find out more about the Party for Kids with Cancer® Fund and [www.campquality.com.au](http://www.campquality.com.au) or contact me Lorraine Lea Independent Stylist.

For further details, contact our Lorraine Lea Independent Stylist:  
Donna Viani  
0412 781 529  
[donna.viani@optusnet.com.au](mailto:donna.viani@optusnet.com.au)  
[www.facebook.com/DonnaViani1](http://www.facebook.com/DonnaViani1)



**RITSUMEIKAN is COMING BACK !!!!**

We are seeking

## **HOST FAMILIES**

For Ritsumeikan Uji JHS Students (14~15 years old)

**From Sun 23<sup>rd</sup> August to Fri 4<sup>th</sup> September**

**12 nights stay, Single Placement**

The students attend **Geebung SS** WEEKDAYS

FREE TO SPEND WEEKENDS AND AFTERNOONS WITH THE FAMILY

HOST FAMILY REQUIREMENTS:

- NO OTHER JAPANESE STAYING IN FAMILY
- 3 MEALS PER DAY
- OWN BED, BUT CAN SHARE A ROOM
- OVER 18'S HOLD BLUE CARD OR WILLING TO APPLY
- SAFE TRAVEL TO AND FROM SCHOOL
- ATTEND FAREWELL DINNER PARTY ON FRIDAY 3 SEPTEMBER

**Remuneration \$490**

**Friendly bilingual support available 24/7**

Please contact your school or the organising company for further  
information,

AUSTRALIA JAPAN STUDY PROGRAMME (AJSP)

Email: [ajspkeiko@gmail.com](mailto:ajspkeiko@gmail.com)

Phone: 0466 547 549 (Keiko)





# Geebung State School



Each and every member of our school community, believes that each and every child can and will achieve.

250 Newman Road, Geebung QLD 4034  
 PO Box 134, Geebung QLD 4034  
 P: 3623 8777 F: 3623 8700  
 E: info@geebungss.eq.edu.au

## STUDENT CONTACT DETAILS UPDATE

Please complete the details below and return to the school Administration Office for records to be updated. For finance and newsletter correspondence please add your current email.

### CHILD/CHILDREN'S NAMES

SURNAME	GIVEN NAMES
1.	
2.	
3.	
4.	
5.	

### PARENT/GUARDIAN/CARER DETAILS

1 <sup>st</sup> Parent/Guardian/Carer	2 <sup>nd</sup> Parent/Guardian/Carer
Mr/Mrs/Ms/Miss	Mr/Mrs/Ms/Miss
Surname: _____	Surname: _____
Given Names: _____	Given Names: _____
Address: _____	Address: _____
_____ Postcode: _____	_____ Postcode: _____
Home Phone: _____	Home Phone: _____
Mobile Number: _____	Mobile Number: _____
(This mobile will receive notifications via text message)	Work Phone: _____
Work Phone: _____	Email: _____
Email: _____	

**BILLING DETAILS:** Parent/caregiver will receive invoices via email. If Fee Allocation is to be shared between parents, please contact the Office for further information.

### EMERGENCY CONTACTS (NOT PARENTS/GUARDIAN/CARERS LISTED ABOVE)

Please ensure that the emergency contact names you provide are people you feel are totally trustworthy to collect your child from school if you cannot be contacted. A friend, neighbour or relative may be your choice but ***it is important you check that they are willing to be recorded on your child's records as an emergency contact.***

	Contact 1	Contact 2	Contact 3
Name			
Relationship			
Home Phone			
Work Phone			
Mobile Phone			

Parent Name: \_\_\_\_\_ Signature: \_\_\_\_\_ Date: \_\_\_\_\_

